

Exhibit B
Site Plans









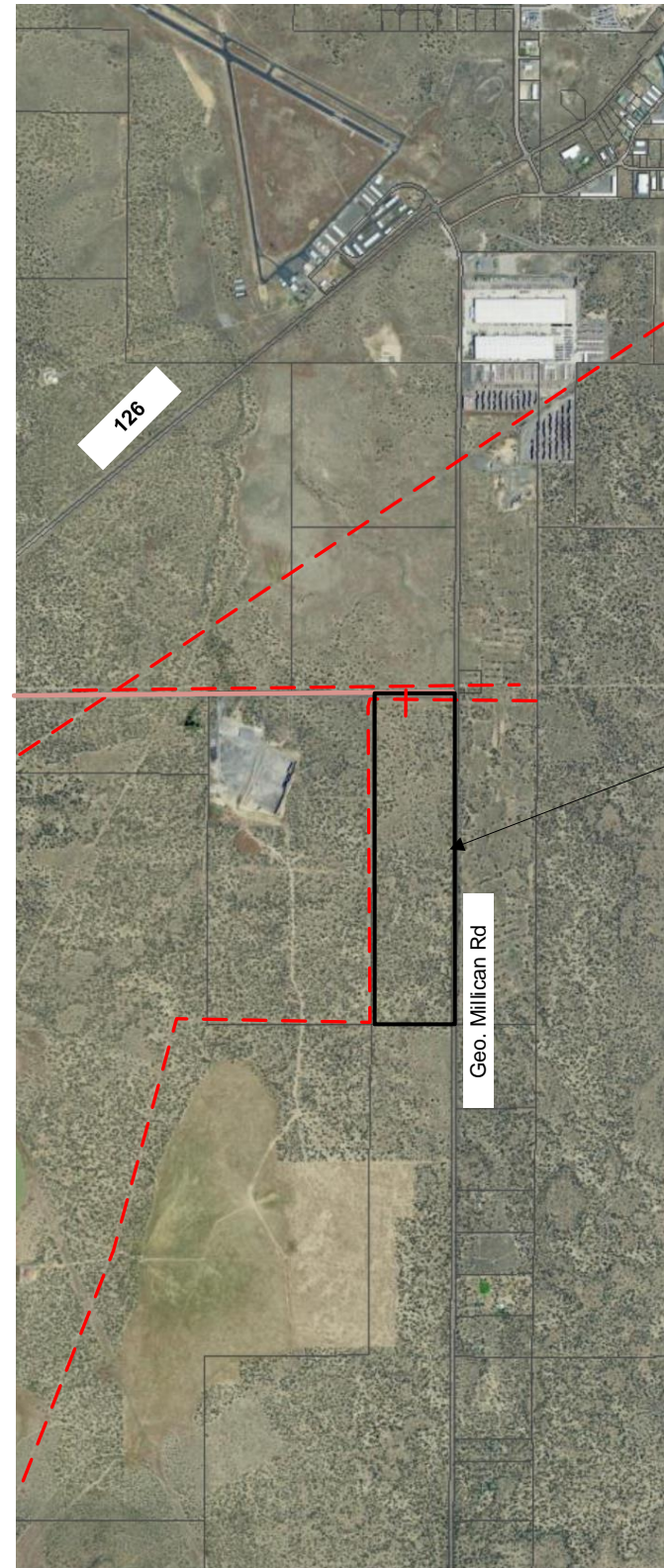
Site Plan: Present Overview TL 1228

GENERAL NOTES

1. DISTANCES, LOCATIONS, AND ROUTING OF ASSOCIATED TRANSMISSION LINES AND ACCESS ARE APPROXIMATE AND SUBJECT TO APPLICANT'S FINAL DESIGN.
2. SOLAR PV FACILITIES SUBJECT TO APPLICABLE ACREAGE RESTRICTIONS.
3. PV FACILITIES FOOTPRINT WILL NOT EXCEED 165 ACRES TOTAL.
4. SETBACK REQUIREMENTS SHALL CONFORM TO CROOK COUNTY STANDARDS FOR PARCELS ZONED EFU-3 INCLUDING TAX LOT BOUNDARIES.

Legend

-  Tax Lot Boundaries
-  Existing Access/Driveways
-  Existing Transmission lines and associated easements
-  Proposed Gen-Tie Routing Area (Alt. Routes Possible)
-  Existing residential power line
-  Existing Buildings



TL 1228, Location of PV Solar facility



Notes: Revision History	 Prepared for: Crook Flat Solar Farm LLC	TITLE: SITE PLAN OVERALL	
		DRAWN BY: Mark Boissevain	
		REV: NA	PAGE: P1 of 3

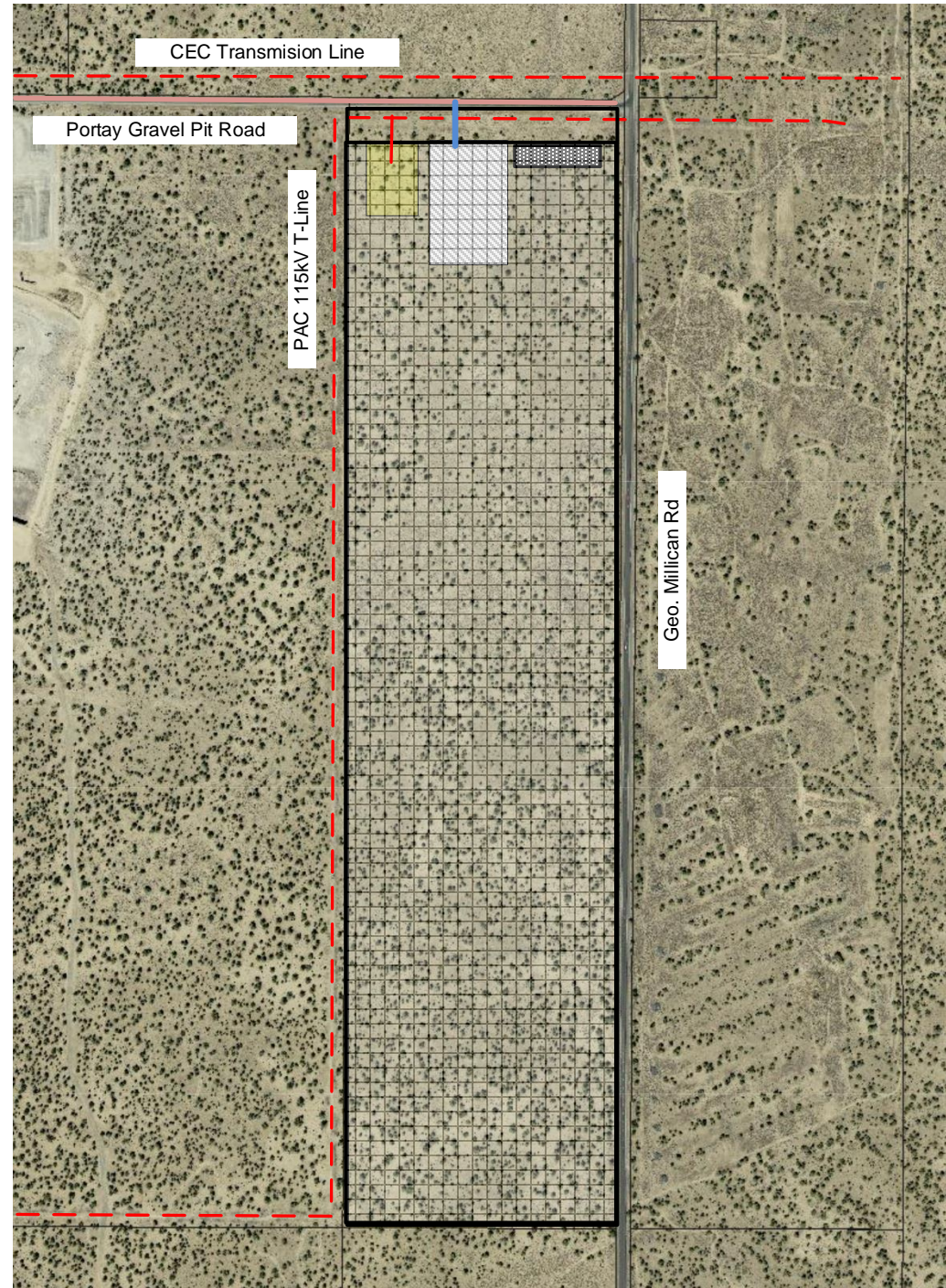


Site Plan: PV Facility Siting Area

Legend

- Modified Access Roads
- Existing Access Road
- PV Facility Siting Area
- Temporary Laydown Yard(s)
- Temporary Construction Trailer Options
- - - Existing Transmission lines and associated easements
- Associated Transmission Line(s) (example routing)
- Substation Facilities Siting Area*

* generally to be adjacent to solar facilities and/or transmission system in vicinity of site.



GENERAL NOTES

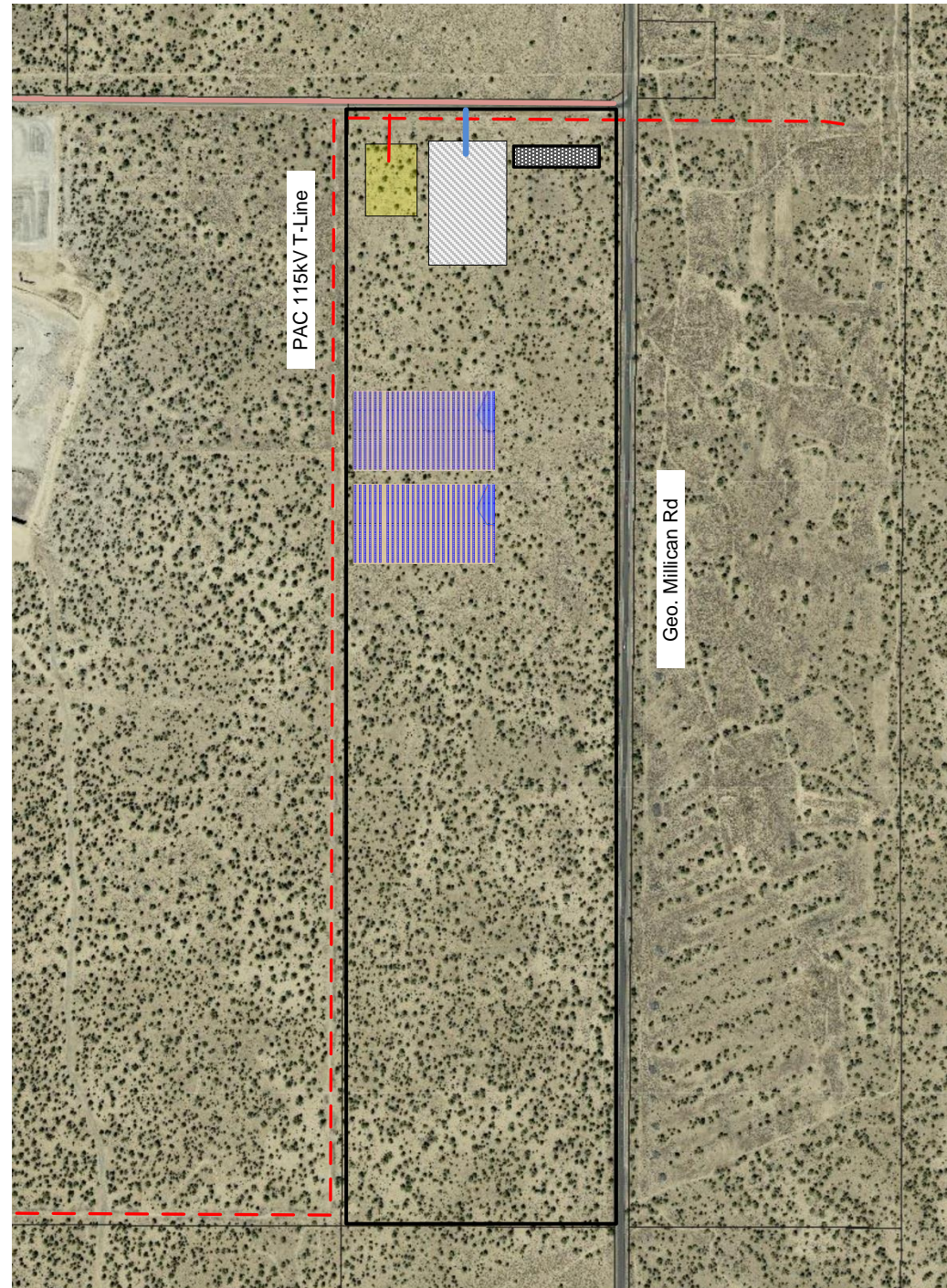
1. DISTANCES, LOCATIONS, AND ROUTING OF ASSOCIATED TRANSMISSION LINES AND ACCESS ARE APPROXIMATE AND SUBJECT TO APPLICANT'S FINAL DESIGN.
2. SOLAR PV FACILITIES SUBJECT TO APPLICABLE ACREAGE RESTRICTIONS.
3. SETBACK REQUIREMENTS SHALL CONFORM TO CROOK COUNTY STANDARDS FOR PARCELS ZONED EFU-3.
4. PV FACILITIES FOOTPRINT WILL NOT EXCEED 160 ACRES TOTAL.

<p>Notes: Revision History</p>	 Prepared for: Crook Flat Solar Farm LLC	TITLE:	SITE PLAN OVERALL
		DRAWN BY:	Mark Boissevain
		REV:	PAGE:
		NA	P2 of 3

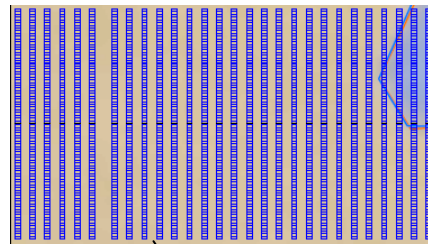


Site Plan: Example Solar PV Facility

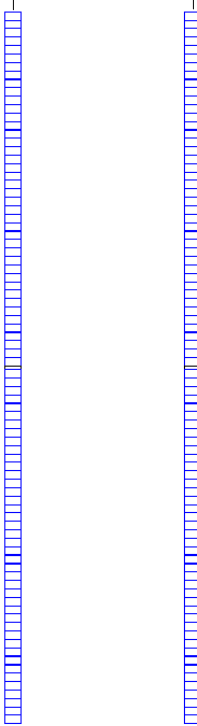
(for illustrative purposes only)



ZOOMED IN VIEW OF MODULE/
TRACKER ROWS



← 15'-25' →



Row-to-Row distance may vary and be increased or decreased in final design.

GENERAL NOTES

1. DISTANCES, LOCATIONS, AND ROUTING OF ASSOCIATED TRANSMISSION LINES AND ACCESS ARE APPROXIMATE AND SUBJECT TO APPLICANT'S FINAL DESIGN.
2. SOLAR PV FACILITIES SUBJECT TO APPLICABLE ACREAGE RESTRICTIONS. PV FACILITIES SITING AREA CONSIDERED IS LESS THAN 320 ACRES.TOTAL.
3. INTERCONNECTION MAY BE TO ONE OR MORE VARIOUS TRANSMISSION AND DISTRIBUTION FACILITIES IN VICINITY.
4. SETBACK REQUIREMENTS SHALL CONFORM TO CROOK COUNTY STANDARDS FOR PARCELS ZONED EFU-3.
5. PV STRUCTURES LAYOUTS ARE SHOWN IN APPROXIMATE LOCATIONS ONLY. TRACKER ROWS RUN NORTH SOUTH, FIXED RACKS RUN EAST-WEST. ACTUAL LOCATION SUBJECT TO FINAL DESIGN.
6. DRAWING NOT TO SCALE.

Legend

- Existing Access Road
- PV Facility Siting Area
- Temporary Laydown Yard(s)
- Temporary Construction Trailer Options
- Existing Transmission lines and associated easements
- Associated Transmission Line(s) (example routing)
- Substation Facilities Siting Area*

* generally to be adjacent to solar facilities and/or transmission system in vicinity of site.

<p>Notes: Revision History</p>	<p>Prepared for: Crook Flat Solar Farm LLC</p>	<p>TITLE: SITE PLAN: PV LAYOUT EXAMPLE</p>
		<p>DRAWN BY: Mark Boissevain</p>
		<table style="width: 100%; border: none;"> <tr> <td style="border: none;">REV: NA</td> <td style="border: none;">PAGE: P3 of 3</td> </tr> </table>
REV: NA	PAGE: P3 of 3	