



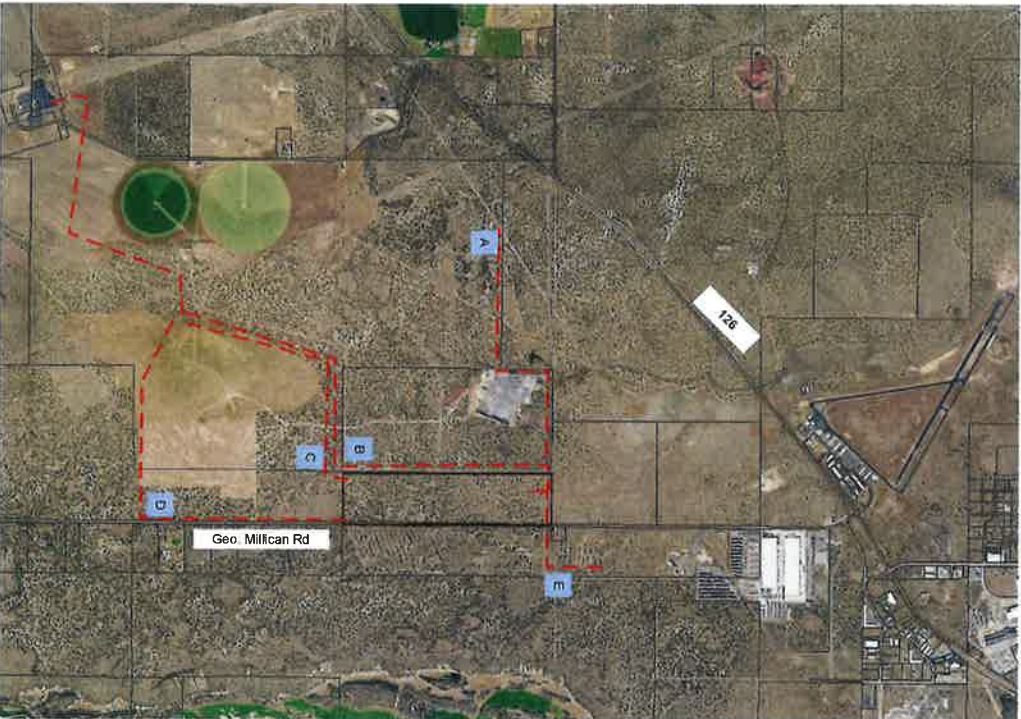
Legend
Tax Lot Boundaries

Proposed Alternative Gen-Tie
Routing Area (Alt. Routes
Possible)

RECEIVED
APR 28 2020
BY: _____



Site Plan: Alternate Transmission Addendum



GENERAL NOTES

1. DISTANCES, LOCATIONS, AND ROUTING OF ASSOCIATED TRANSMISSION LINES AND ACCESS ARE APPROXIMATE AND SUBJECT TO APPLICANT'S FINAL DESIGN.
2. SOLAR PV FACILITIES SUBJECT TO APPLICABLE ACREAGE RESTRICTIONS.
3. PV FACILITIES FOOTPRINT WILL NOT EXCEED 320 ACRES TOTAL.
4. SETBACK REQUIREMENTS SHALL CONFORM TO CROOK COUNTY STANDARDS FOR PARCELS ZONED EFU-3 INCLUDING TAX LOT BOUNDARIES.

ALTERNATIVE ATLS

- A. ATL path across TL 1231 to a connection point on TL 1208 and the Pacificcorps Baldwin-Ponderosa Transmission line.
- B. ATL Path on TL 1231, 1208 alongside or underneath Pacificcorps Houston Lake -Ponderosa Transmission Line and connecting to either Ponderosa or Corral Substation.
- C. ATL Path on TL 1229 and 1208 to BPA Ponderosa Station.
- D. ATL Path on TL 1229 and 1208 adjacent to CEC distribution line, then to Ponderosa Substation.
- E. ATL Path across Millican Road either under or adjacent to existing PAC 115kV line on TL 2200 to Sterns Butte Substation (Q0850) location.

Notes:
Revision History

 Prepared for: Crook Flat Solar Farm LLC		TITLE: ALTERNATE TRANSMISSION ROUTES
REV: MA	DRAWN BY: Mark Pasterman	PAGE: 11 of 11

