

Supplemental Exhibit

Soil Assessment for Alternative ATLs



Soils review of areas considered for alternate Associated Transmision Line ATL(s) for Crook Flat Solar Farm.

If alternate ATLs are required for continued project development of Applicant’s solar project, alternate routes to different gen-tie points have been identified in reference document Crook Flat Site Plan_alt_ATLsv4.pdf. The alternate ATL routes include routes that traverse TLs 1208, 1229, and 1231.

This Supplemental Exhibit is provided to show that these alternate paths meet the requirements of ORS 215.274 in that they will not be located on high value farmland (HVF).

Soils Study

The soils study was undertaken by the Applicant via the USDA affilaited website (<https://websoilsurvey.sc.egov.usda.gov/>). Two areas of Interest (AOI) were chosen for ease of interpretation.

The 1st, in Figure 1, identifies the non-irrigated land classes all belonging to Class 6, a non-arable land class. Table 1 identifies the two soil types with the same soil Class rating of 6.

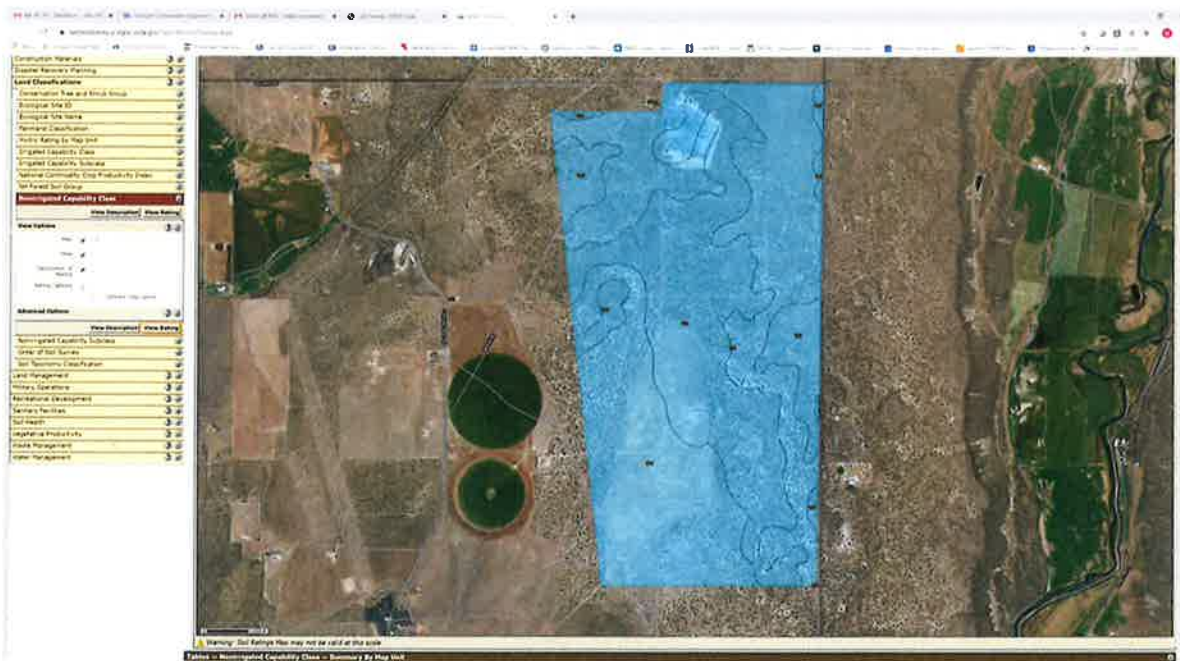


Figure 1. AOI #1 Northern part of alternate ATL parcel(s) showing all land classes as Class 6, non-arable soils.

Summary by Map Unit — Prineville Area, Oregon (OR654)

Map unit symbol	Map unit name	Rating	Acres in AOI	Percent of AOI
143	Stukmond-Lickskillet-Redmond complex, 0 to 8 percent slopes	6	695	42.00%
144	Redmond-Stukmond complex, 0 to 8 percent slopes	6	958.1	58.00%
Totals for Area of Interest			1,653.20	100.00%

Table 1 AOI Land Classes for the AOI included in Figure1.

The 2nd AOI, shown in Figure 2 identifies the non-irrigated land classes as the large majority in Class 6&7 (non-arable). There is a small portion (6.6 acres) that is classified as Class 4. However, the alternate ATLs shown in the reference document do not show the ATLs being located in this portion of the AOI. This portion of the AOI is also on a hilly portion of the parcel, which is not a desirable ATL location.



Figure 2. AOI #2 for the southern portion of the alternate AOI parcel showing land classes as Class 6 and 7 with a small area (yellow highlight as Class 4)

Map unit symbol	Map unit name	Rating	Acres in AOI	Percent of AOI
143	Stukmond-Lickskillet-Redmond complex, 0 to 8 percent slopes	6	54.2	24.10%
144	Redmond-Stukmond complex, 0 to 8 percent slopes	6	140.3	62.20%
147	Ayresbutte-Ayres complex, 3 to 8 percent slopes	6	20.1	8.90%
156	Ginserly-Hatrock complex, 12 to 30 percent north slopes	4	6.6	2.90%
262	Tristan extremely cobbly loam, 12 to 35 percent south slopes	7	4.3	1.90%
Totals for Area of Interest			225.5	100.00%

Table 2. 1 AOI Land Classes for the AOI included in Figure 2.

Summary

The proposed alternate ATL paths meet the requirements of ORS 215.274 in that they will not be located on high value farmland (HVF).