



Bear Creek

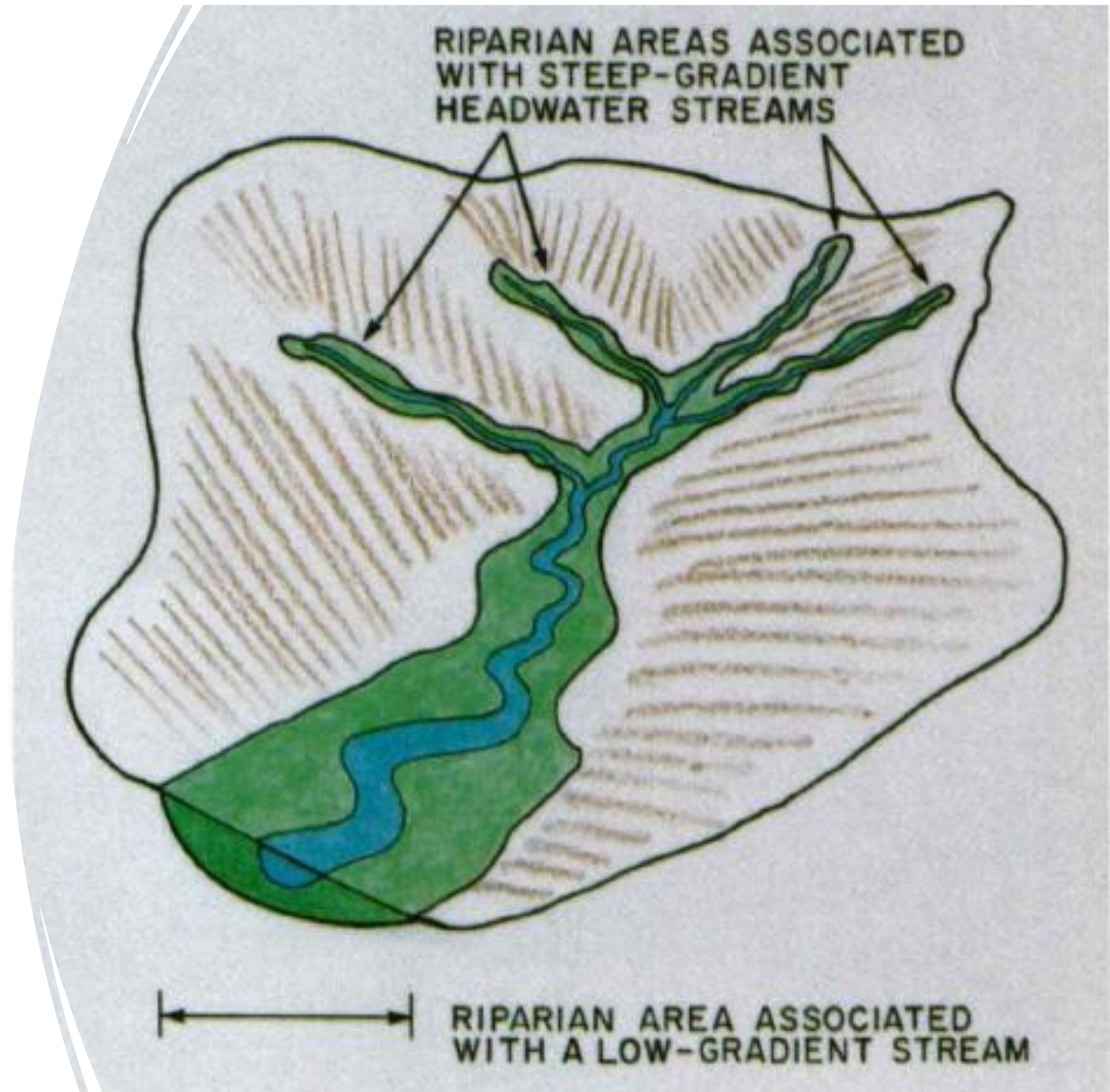
History, Management, Partnership, and Conservation

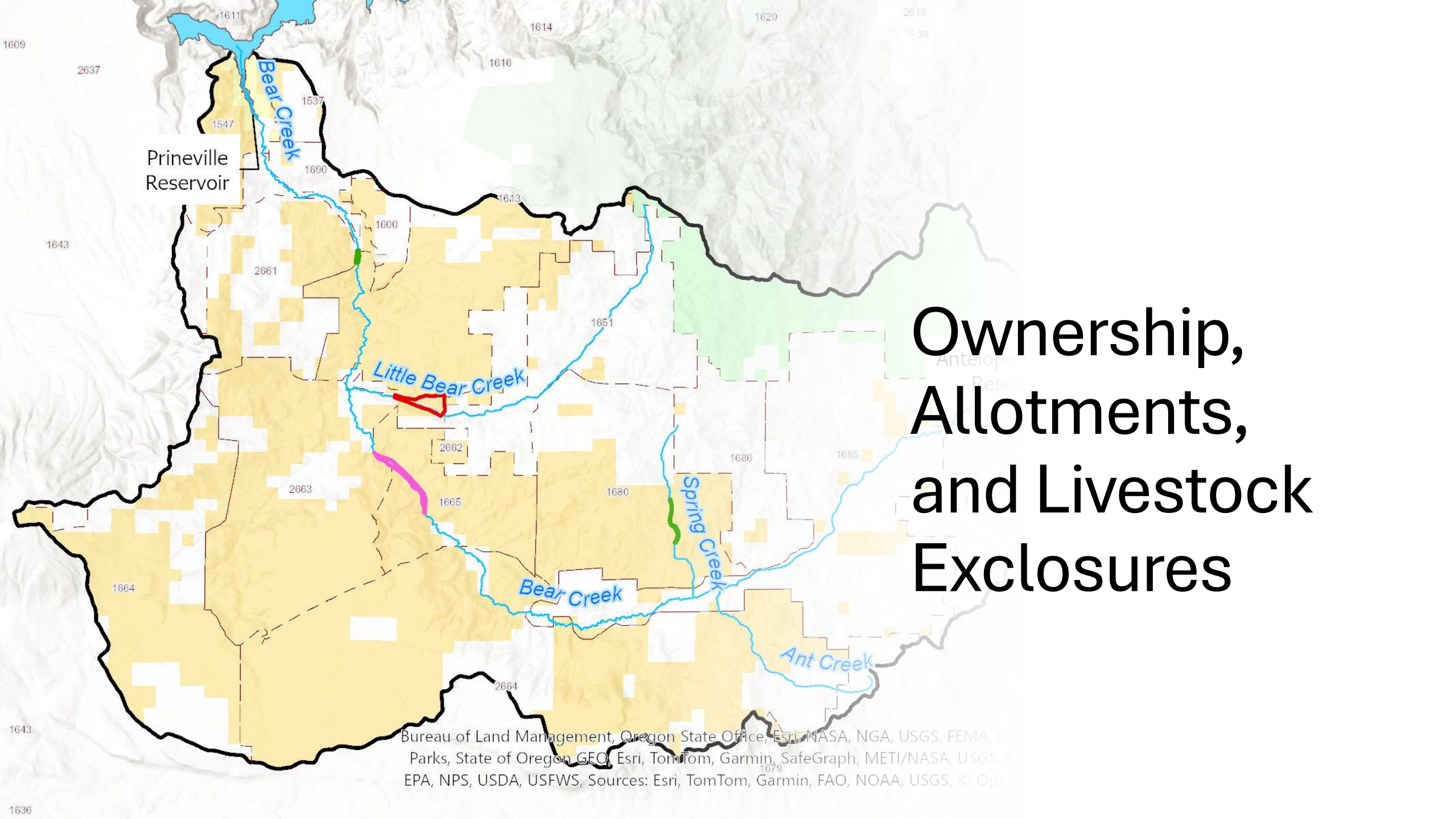
Wesley Noone, M.S.

BLM Deschutes Field Office Hydrologist

Presentation Outline

- Watershed problems
- Willow Protection Fence (aka Bear Creek Exclosure)
- Project partnerships
- Riparian zone values
- Project proposal





Ownership, Allotments, and Livestock Exclosures

Bureau of Land Management, Oregon State Office, Esri, NASA, NGA, USGS, FEMA, Corps of Engineers, National Park Service, State of Oregon GEO, Esri, TomTom, Garmin, SafeGraph, METI/NASA, USGS, BLM, EPA, NPS, USDA, USFWS, Sources: Esri, TomTom, Garmin, FAO, NOAA, USGS, © OpenStreetMap contributors



Photo ca. 1915

Late 1800s- early 1900s

“...For 50 years, there was no one to throw in the towel and the punishment the public domain soils and forage received was frightful and devastating.

The bruises and cuts had no time to heal and they developed into cantankerous growth (sage, noxious plants) and running sores (washes, gullies) which can only be cured by a tremendous expenditure of labor and equipment and by the concerted cooperation of stockmen in practicing proper range use. Fifty years were needed to tear down the house that nature built and at least half that time will be needed to build a second-hand house and the other half to build the necessary additions.”

-Charles C. Parsell, Prineville District Grazier, 1938

Fence Objectives

- Exclude livestock
- Provide habitats for wildlife
- Aid in livestock distribution



Partnerships

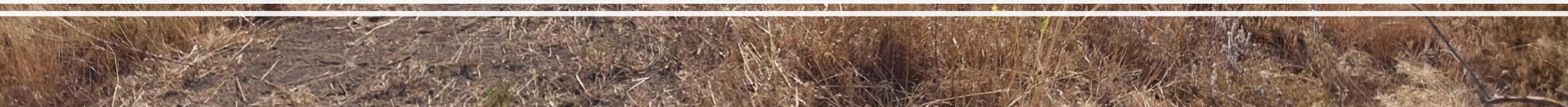


The Nature
Conservancy





Value 1 Riparian Vegetation



Value 2 Wildlife habitat



Value 3 Water Quality



Photo March 2024



Value 4 Fish Habitat



Photo of Redband Trout, a BLM Special Status Species, captured in Bear Creek during September 2025 surveys.

Photo Credit: Jerry George, ODFW District Biologist

Project Features

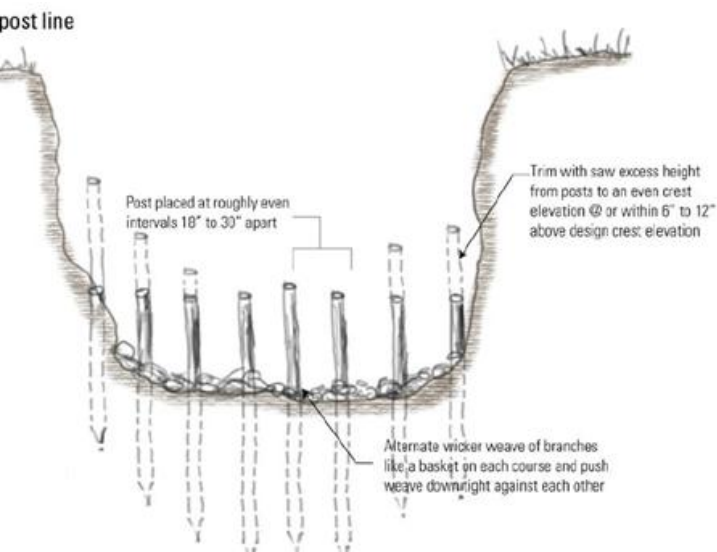
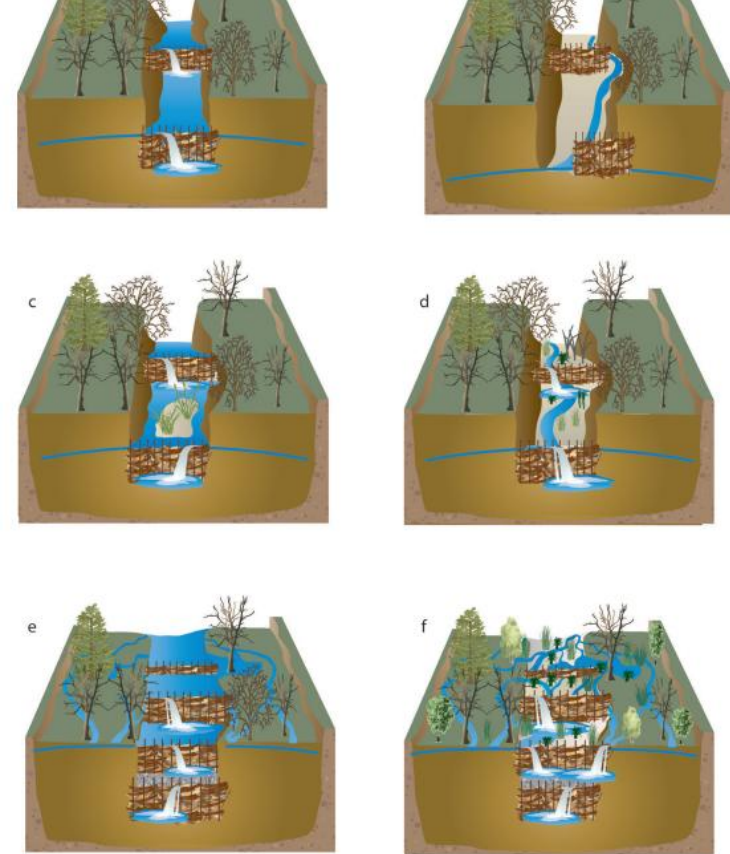
- Fencing



Features cont.

Planting woody riparian
species

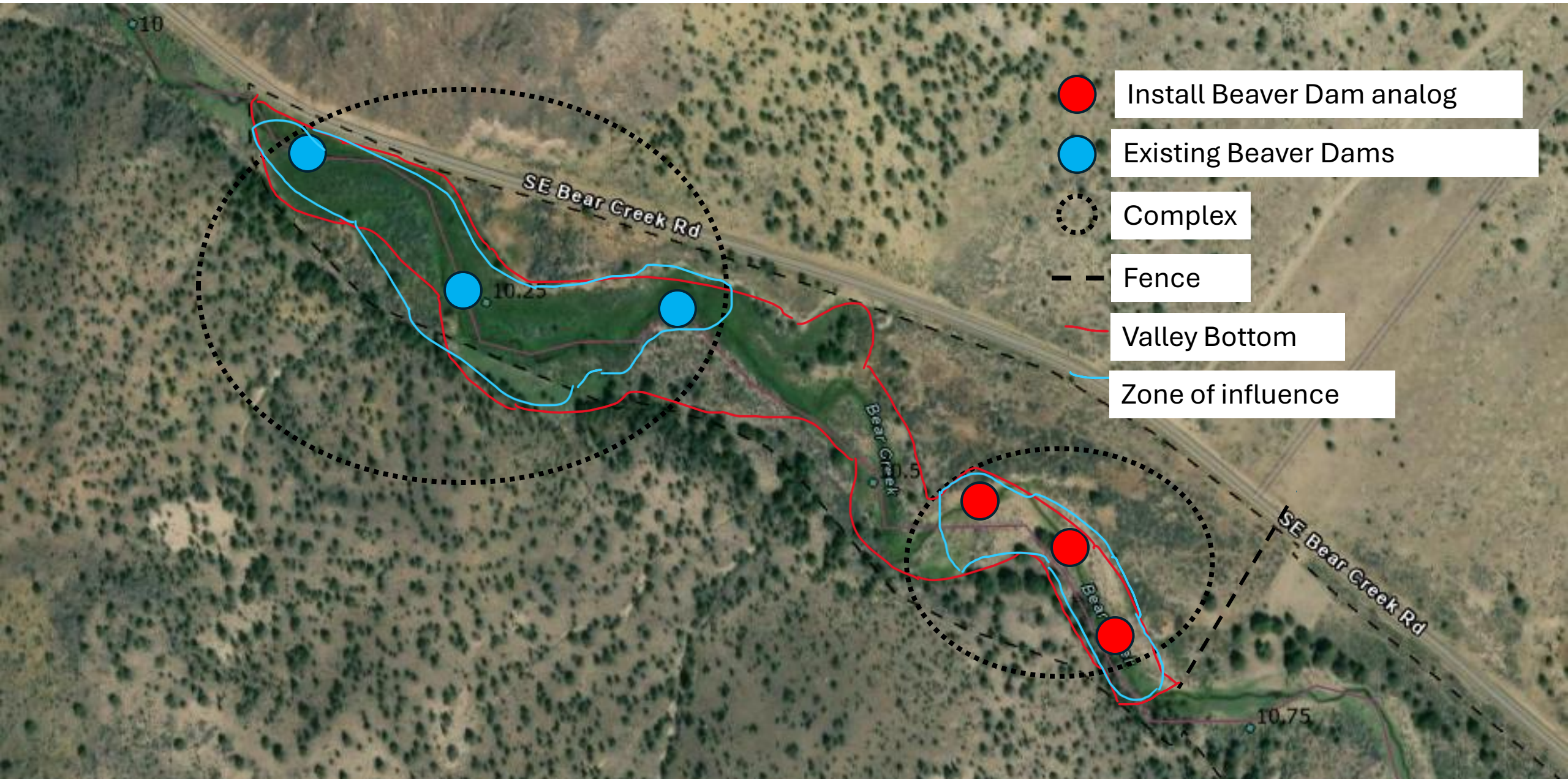




Features cont.

- Beaver dam analogues
- Post-assisted log structures

BDA Placement Example



Features cont.



- Juniper felling

Native grasses, shrubs and water returning to a project site after the removal of western juniper in Crook County, Oregon.

Time for Questions

Thanks to BLM Headquarters, Oregon/Washington State office,
Prineville District Leadership, and Crook Co. NRAC

Sources

Conceptual diagrams adapted from: [A Way Forward: BeaverHOODs – Western Beavers Cooperative](#)

Video courtesy of Reese Mercer

Bureau of Land Management. 2022. Conserving and Restoring Riparian, Fisheries, and Water Resources in a Changing Climate: A 5-Year Strategy for the BLM's Aquatic Resources Program. U.S. Department of the Interior, Bureau of Land Management, Lakewood, CO.



November 2024

March 2025

November 2025



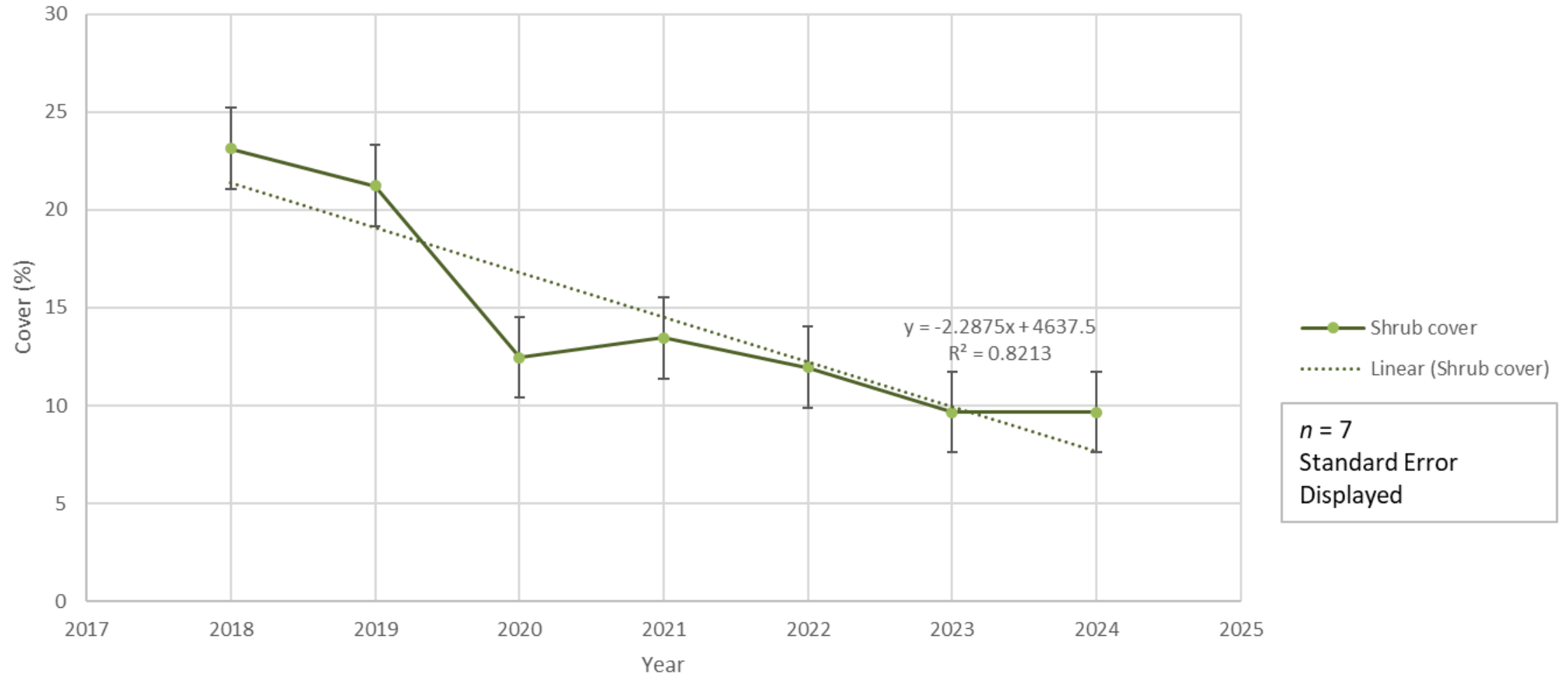
November 2024



November 2025



Willow Protection Fence Shrub Cover 10m (Riparian Areas)



Willow Protection Fence Shrub Cover 30m (Riparian Areas)

