

Crook County COVID-19 Epidemiology Summary as of 8/23/21

Crook County Case Summary

Total known cases of COVID-19	1,667
Cases per 10,000 population	712 cases per 10K
COVID-19 Deaths	29

Crook County Case Details

Cases by Age Group

Age 9 or younger	73
Age 10 to 19	160
Age 20 to 29	259
Age 30 to 39	234
Age 40 to 49	292
Age 50 to 59	220
Age 60 to 69	213
Age 70 to 79	134
Age 80 or older	82
Age Data Unavailable	0

Cases by Sex

Female	895
Male	755
Sex Data Unavailable	17

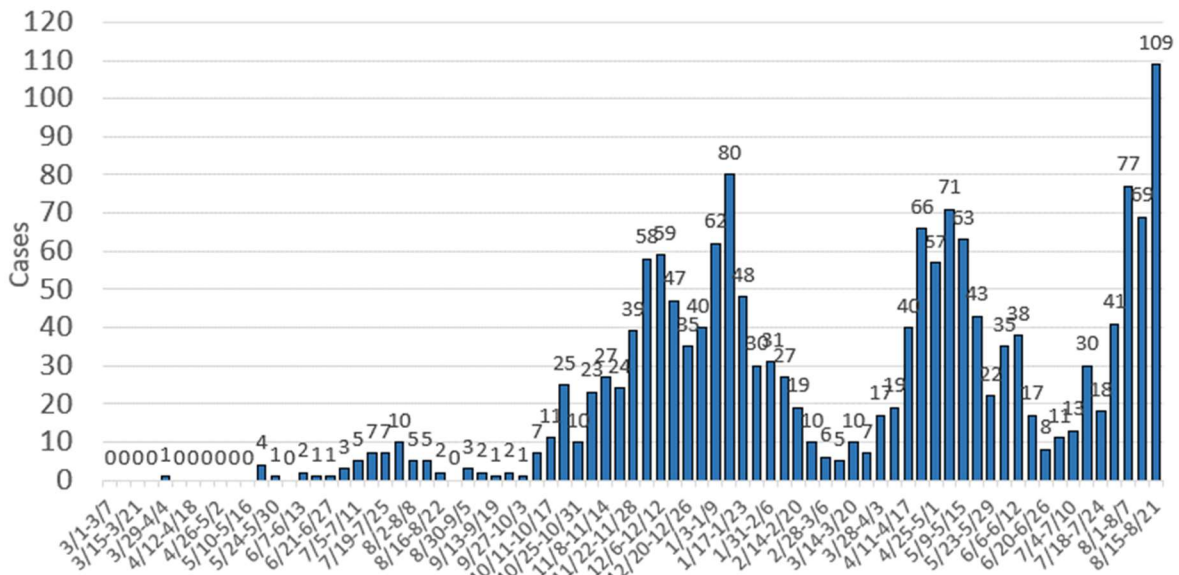
Was Case Hospitalized During Illness?

Yes	99
No	1,568
Hospitalization Data Unavailable	0

Does Case Have Recent (Domestic/International) Travel?

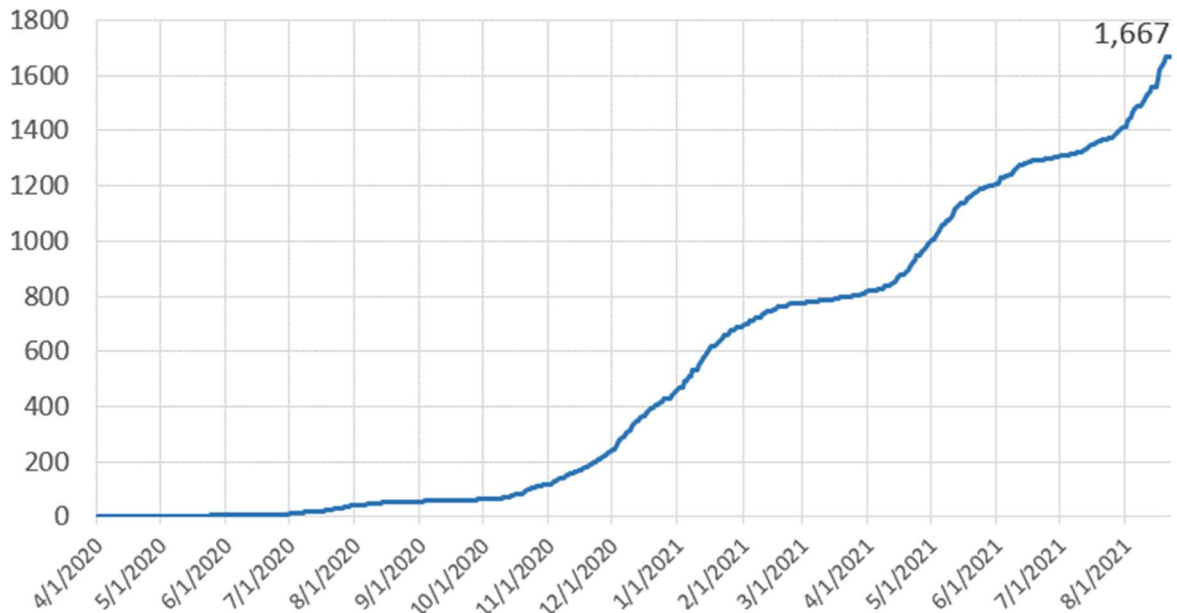
Yes	178
No	1,074
Travel History Data Unavailable	415

Crook County Known COVID-19 Cases by Week



Data for this week is not yet included. This graph shows the number of cases reported into OPERA by week, based on the date a case was first identified as a case. This data differs from the date Oregon Health Authority first reports the case for Crook County in daily press releases.

Crook County Known COVID-19 Cases - Cumulative



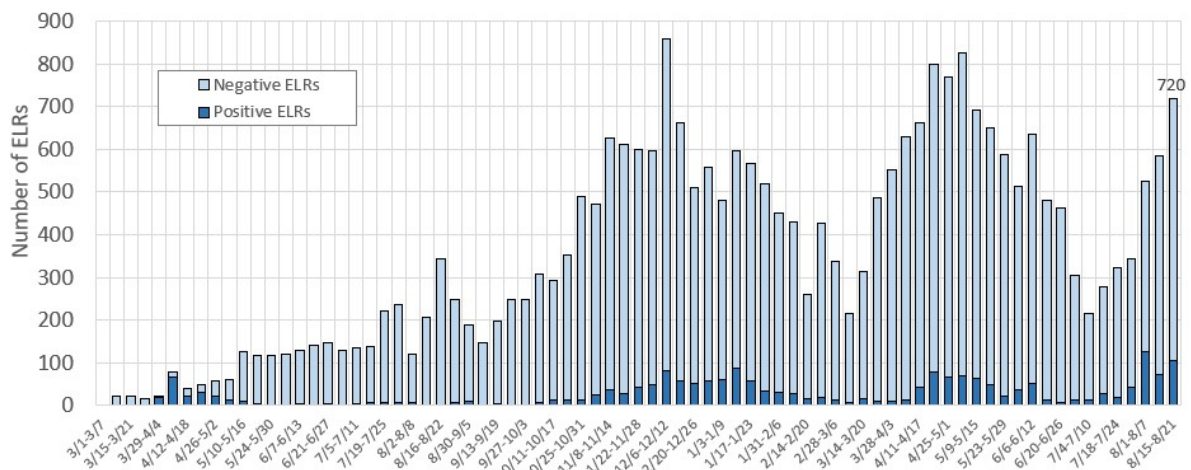
This graph shows the epidemiological curve of the number of cases reported into OPERA based on the date a case was first identified as a case. This data differs from the date Oregon Health Authority first reports the case for Crook County in daily press releases.

Crook County Electronic Laboratory Reporting Summary

Beginning 12/3/20, Oregon Health Authority transitioned to reporting total Electronic Laboratory Reports (ELRs) rather than reporting total persons tested. Electronic Laboratory Reports better reflect the total volume of tests for a county and may include duplicate positives and/or duplicate negatives for individuals.

Crook County Positive ELRs	2,054
Crook County Negative ELRs	25,409
Crook County Total ELRs	27,463
Percent of ELRs positive	7.5%
Weekly percent of ELRs positive (Calendar Week 8/15-8/21)	14.4%

Crook County Weekly Electronic Laboratory Reports Received

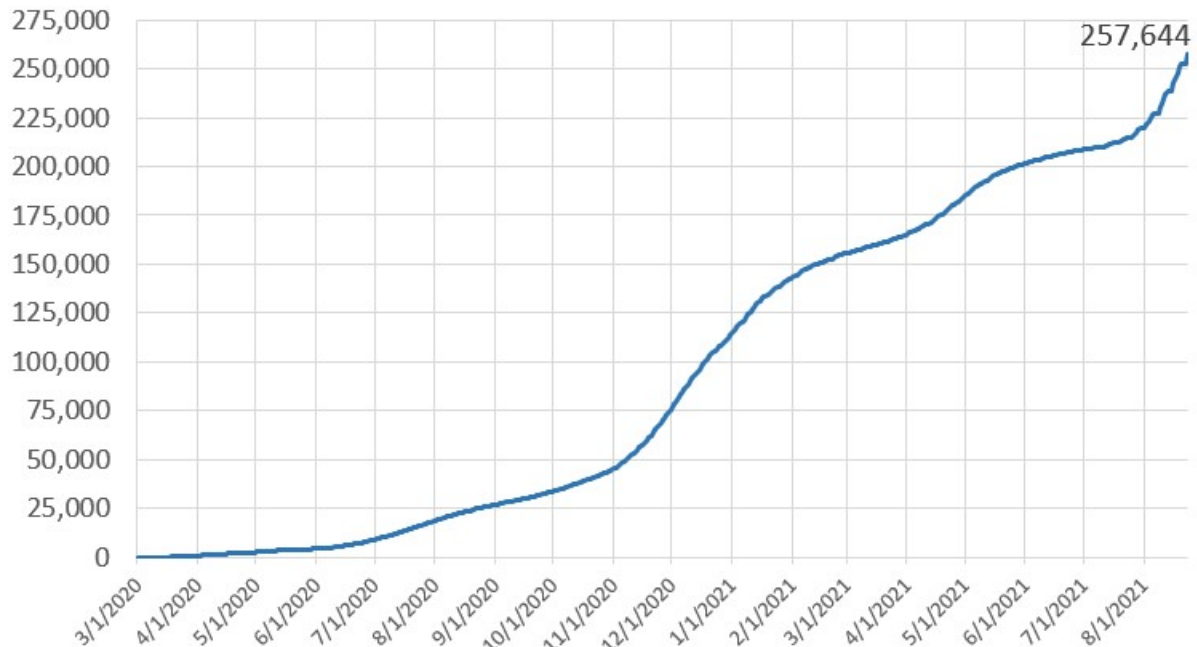


Data for this week is not yet included. Data is as of Monday, 8/23/21. Electronic Laboratory Reports reported on the [OHA testing dashboard](#) and are classified based on date of ELR receipt.

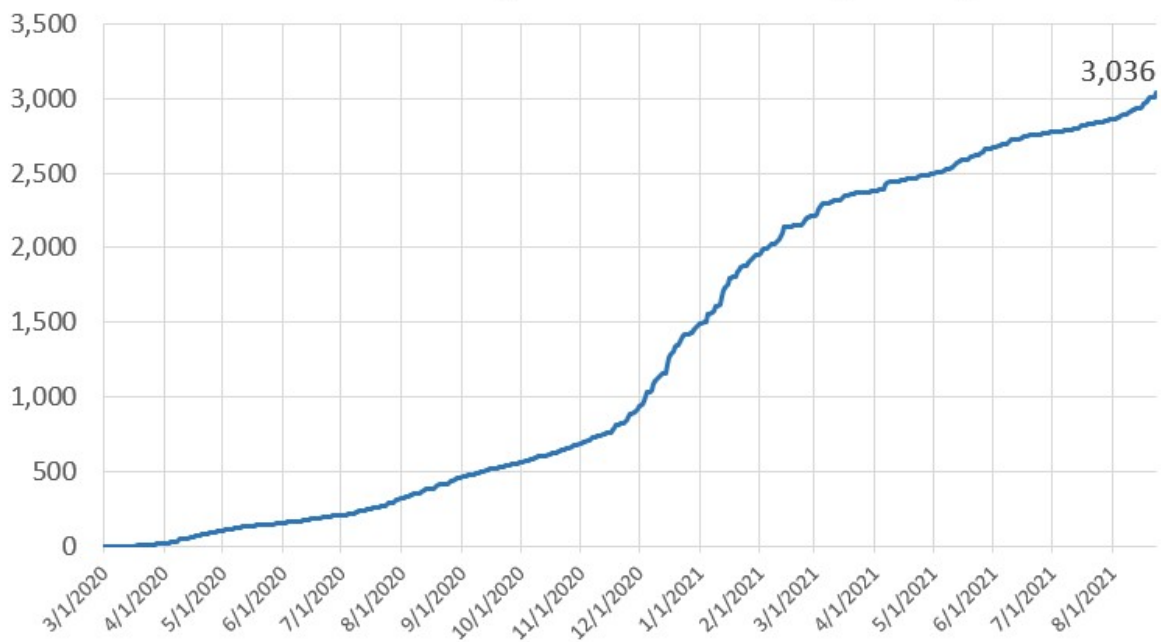
Oregon Case Summary

Total Known Cases of COVID-19 Statewide	257,644
COVID-19 Deaths Statewide	3,036

Cumulative Number of Known Oregon COVID-19 Cases - by Date Reported



Cumulative Number of Oregon COVID-19 Deaths - by Date Reported

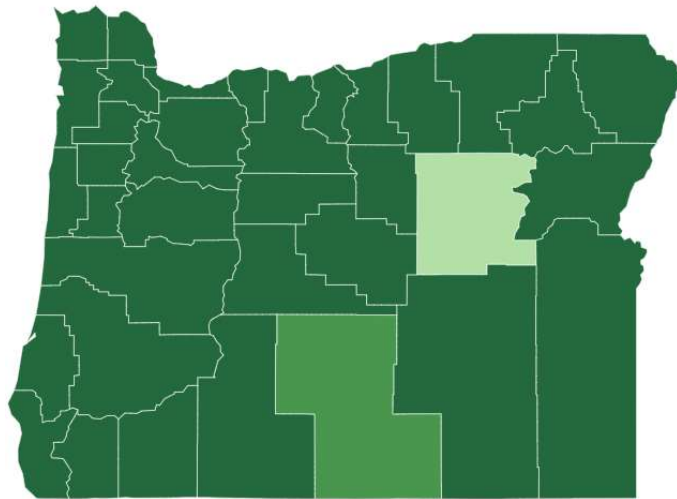


COVID-19 Community Spread

This map shows the metrics Oregon public health officials and the CDC have developed to track COVID-19 community spread. For more information, visit the Oregon's COVID-19 Community Spread dashboard:

<https://public.tableau.com/app/profile/oregon.health.authority.covid.19/viz/OregonCOVID-19PublicHealthIndicators/Risk>

Click on a county to see more information



Statewide

Week of **8/8/2021**

309.3 cases per 100k residents

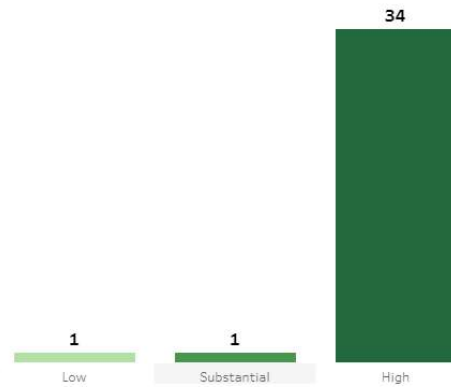
11.7% test positivity

Community Transmission

- High
- Substantial
- Low

Select one of the bars below to highlight the counties in that level of community transmission.

Counties by Level of Community Transmission



Indicators

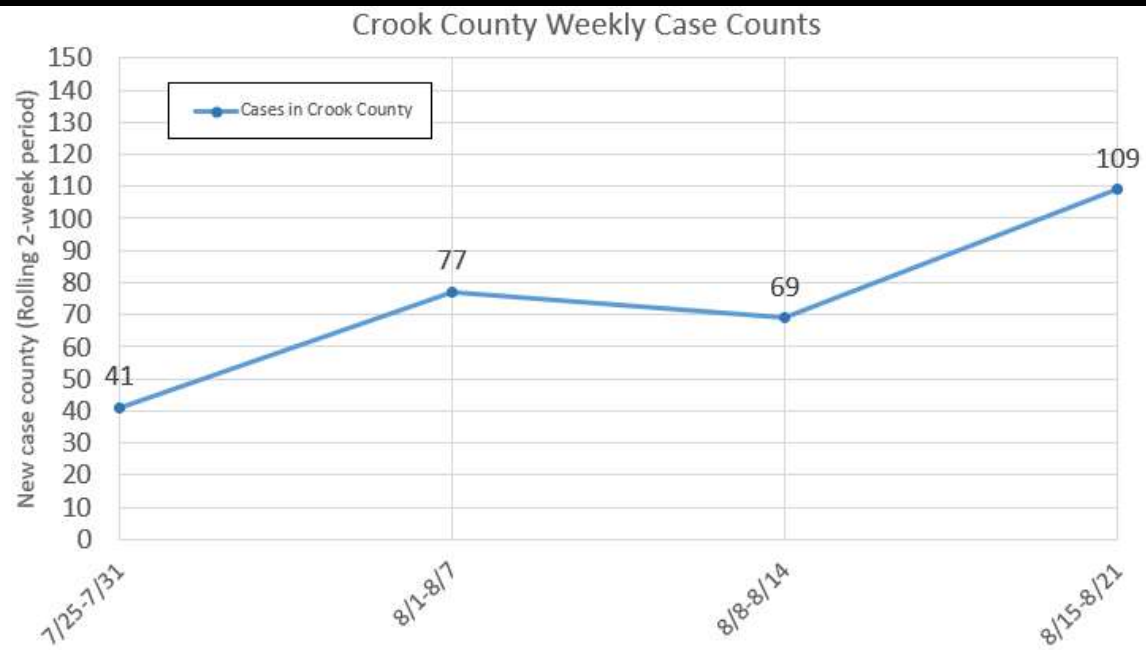
Total new cases per 100,000 persons in the past 7 days

Percentage of test positivity over 14 days

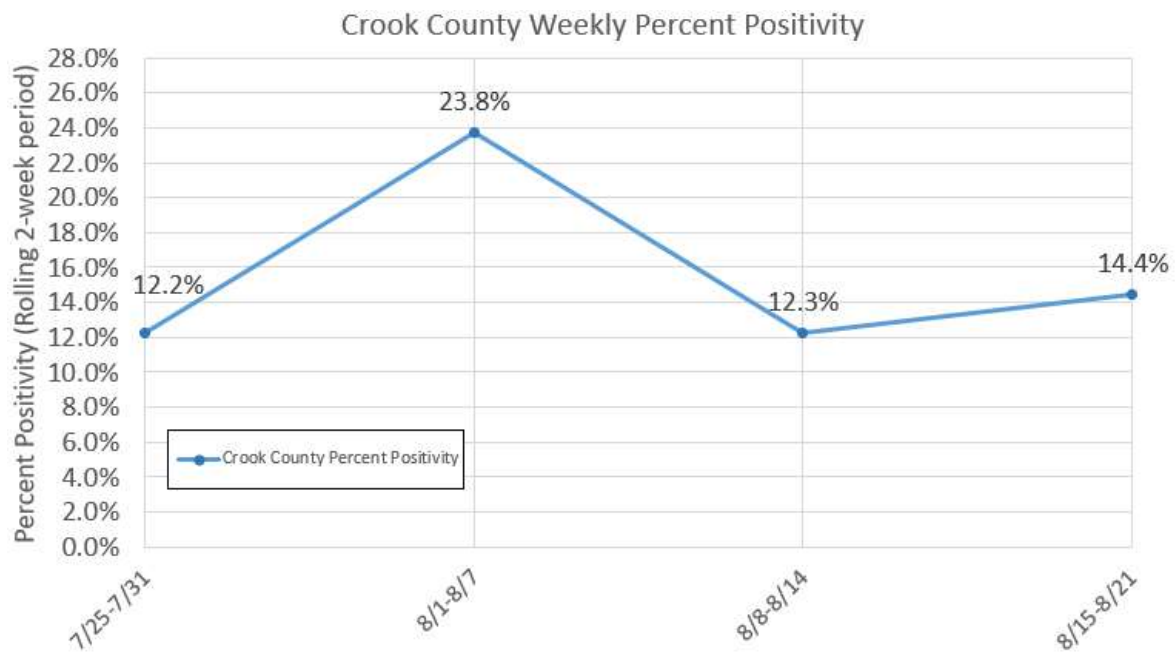
Low Transmission	Moderate Transmission	Substantial Transmission	High Transmission
<10.0	10.0 to <50.0	50.0 to <100.0	≥100.0
<5.0%	5.0% to <8.0%	8.0% to <10.0%	≥10.0%

Time Period	Level of Spread	Case Count	Cases per 100,000	Test Positivity
7/25 – 7/31	High	41	174.9	12.2%
8/1– 8/7	High	77	328.5	23.8%
8/8 – 8/14	High	69	294.4	12.3%
8/15 – 8/21	High	110	469.3	14.4%

Ready Schools, Safe Learners: Community COVID-19 Advisory Metrics



This graph shows the number of cases in one week periods. Data current as of Monday, 8/23/21. Data are subject to change.

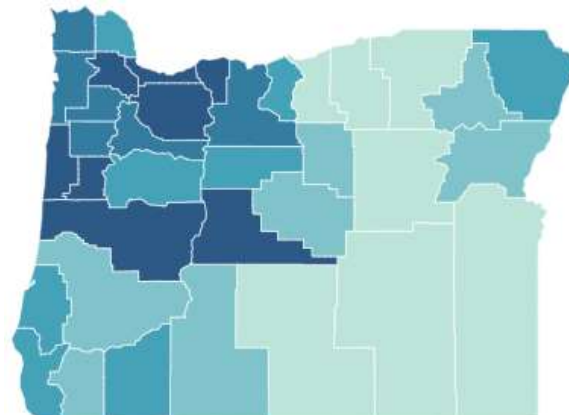


This graph shows the percent positivity in one week periods. Data current as of Monday, 8/23/21. Data are subject to change.

COVID-19 Vaccination Trends

Oregon COVID-19 Vaccination Data

The map shows the number of people vaccinated per 10,000 by county of residence, reported on [OHA COVID-19 Vaccination Trends dashboard](#). Data are current as of 8/23/21.



Legend for Rate per 10,000:
3,252 6,705

Crook County COVID-19 Vaccination Data (as of 8/23/21)

Total residents with COVID-19 vaccination series in progress	Total residents fully vaccinated for COVID-19	Total residents in progress or fully vaccinated for COVID-19	Total residents in progress or fully vaccinated for COVID-19 per 10,000 population
900	9,844	10,744	4,584

Crook County COVID-19 Vaccination Data Details

People Vaccinated* by Age Group		People Vaccinated* by Sex	
Age 12 to 17	363	Female	5,580
Age 18 to 19	158	Male	5,050
Age 20 to 29	669	Sex data unavailable	14
Age 30 to 69	927	People Vaccinated* by Race and Ethnicity**	
Age 40 to 49	1,156	American Indian/Alaska Native	207
Age 50 to 59	1,560	Asian	85
Age 60 to 69	2,587	Black	64
Age 70 to 79	2,348	Hispanic	537
Age 80 or older	976	Native Hawaiian/Pacific Islander	26
*People vaccinated includes those with vaccination series in progress and those fully vaccinated. **Individuals contribute to the counts of only one racial or ethnic group.		White	9,076
		Other race	84
		Unknown	665