

ADDENDUM NO. 2

Date: November 1, 2024

To the Contract Documents for the construction of
**NEW AVIATION T-HANGAR AND TAXILANE
PRINEVILLE - CROOK COUNTY AIRPORT
AIG (BIL) Project No. 3-41-0051-023-2025**

TO ALL PLANHOLDERS AND/OR PROSPECTIVE BIDDERS:

The following changes, additions, and/or deletions are hereby made a part of the Contract Documents for the construction of “**New Aviation T-Hangar and Taxilane**” dated October 2024, as fully and completely as if the same were fully set forth therein.

SECTION IV – GENERAL CONSTRUCTION ITEMS:

- CONSTRUCTION SAFETY AND PHASING PLAN (CSPP)
 - Page 1
 - Section 2.2 Assume Responsibility, replacing the section entirely to read:

“**2.2 ASSUME RESPONSIBILITY.** The Airport Operator has submitted this CSPP for Federal Aviation Administration (FAA) approval. It is the Contractor’s responsibility to apply the requirements of the FAA approved CSPP. The Contractor must revise the CSPP when conditions warrant changes prior to implementing any changes. Revisions to the CSPP must be submitted to the Airport Operator for FAA approval prior to implementing any changes.

This CSPP has been preliminarily approved by the FAA, and has been submitted for final review with the following ASN #'s:

- 2024-ANM-4846-NRA
- 2024-ANM-4847-NRA
- 2024-ANM-4848-NRA
- 2024-ANM-4849-NRA
- 2024-ANM-4850-NRA

These ASN cases are currently pending final FAA approval.”


- Page 2, section 2.5 COORDINATION, paragraph 3. **FAA Air Traffic Organization (ATO), Airports District Office (ADO), and NAVAID Impacts** change the third sentence to read:
 - “The project has been coordinated with Brian Alvis, Project Manager, Seattle ADO.”

SECTION VII – DRAWINGS:

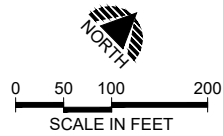
- Sheets No. 6 and 7 CONSTRUCTION SAFETY AND PHASING PLAN - PHASE 1 and 1A
 - Replace the sheets in entirety with the revised Addendum No. 2 Sheets No. 6 and 7
- Sheets No. 8 and 9 ADDITIVE BID CONSTRUCTION SAFETY AND PHASING PLAN - PHASE 2 and 2A
 - Replace the sheets in entirety with the revised Addendum No. 2 Sheets No. 8 and 9

SUPPLEMENTAL INFORMATION

All bidders shall acknowledge receipt and acceptance of Addendum No. 2 in the Proposal or by submitting the Addendum with the bid package. Proposals submitted without acknowledgement or without this Addendum will be considered nonresponsive.



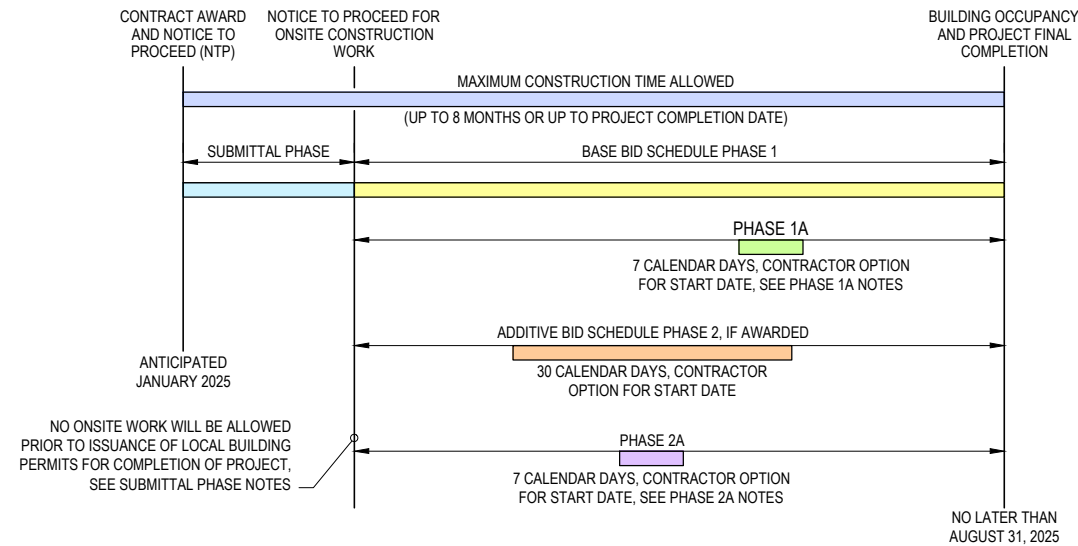
Tracy May, PE
Precision Approach Engineering, Inc.



LEGEND

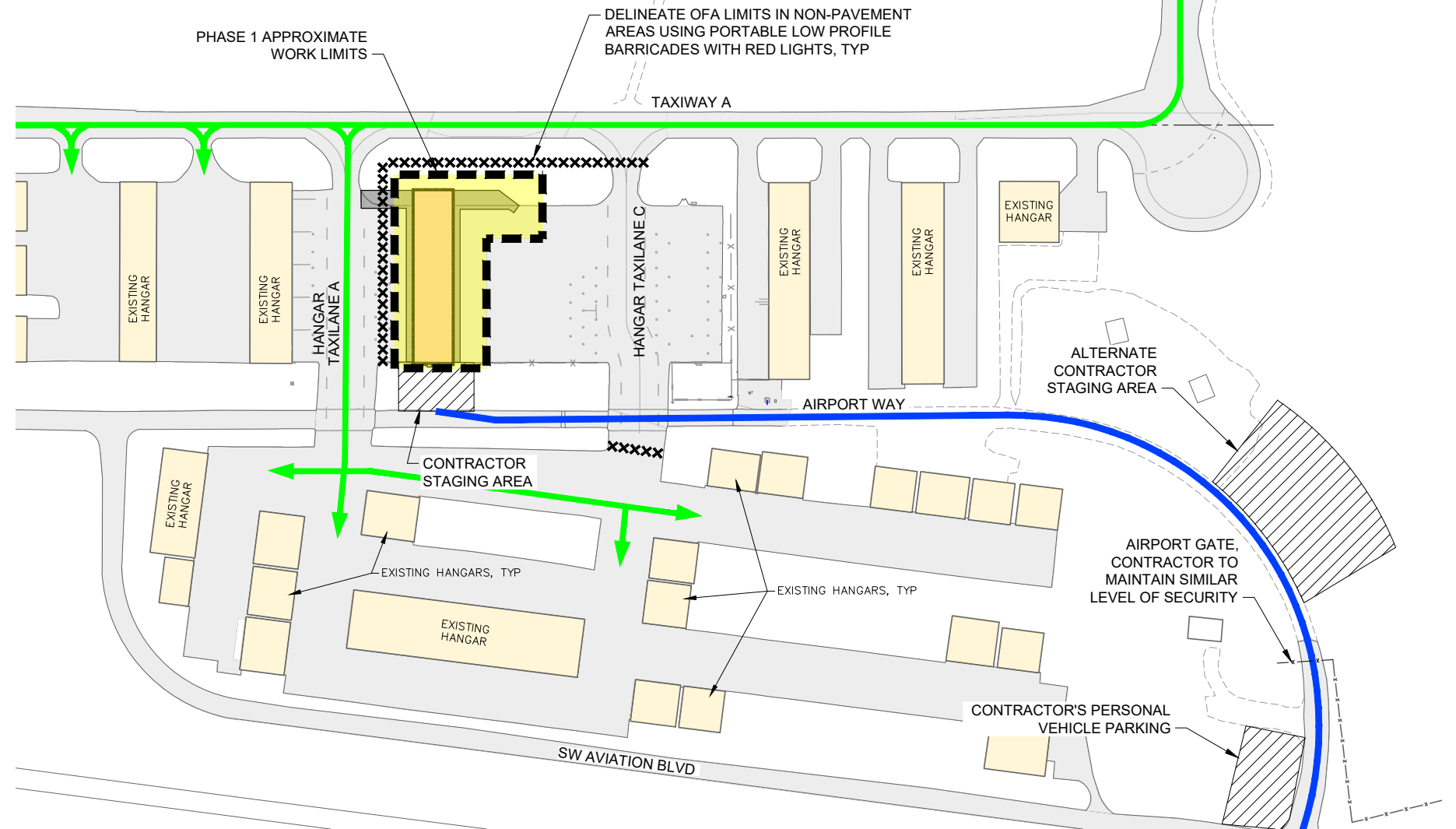
- AIRCRAFT OPERATIONS, SEE CONSTRUCTION PLAN GENERAL NOTE 8, SHEET 10.
- CONSTRUCTION TRAFFIC, SEE CONSTRUCTION PLAN GENERAL NOTE 8, SHEET 10.
- XXXXX PORTABLE LOW PROFILE BARRICADES WITH RED LIGHTS TO BE PLACED BY THE CONTRACTOR DURING TAXILANE, APRON AND/OR OTHER WORK AREA CLOSURES THIS PHASE OR AS DIRECTED BY THE ENGINEER. BARRICADES TO BE PLACED OUTSIDE OF TAXIWAY SAFETY AREAS FOR OPEN TAXIWAYS OR TAXILANES. MAY REQUIRE ADJUSTMENT DURING CONSTRUCTION ACTIVITIES, SEE CONSTRUCTION SAFETY AND PHASING PLAN TEXT AND DETAIL.

PROJECT CONSTRUCTION SCHEDULE



PROJECT CONSTRUCTION SCHEDULE NOTES

- A. TAXIWAYS, TAXILANES, AND AIR OPERATIONS AREA (AOA) IMPACTS ASSOCIATED WITH EACH PHASE ARE AS INDICATED ON THE DRAWINGS.
- B. IF THE CONTRACTOR FAILS TO COMPLETE ANY OF THE PHASES WITHIN THE SPECIFIED TIME PERIOD, LIQUIDATED DAMAGES MAY BE ASSESSED, SEE SPECIFICATIONS.
- C. CONTRACTOR WILL BE ALLOWED 7 CALENDAR DAYS TO COMPLETE THE WORK IN PHASE 1A. PHASE 1A SHALL NOT EXTEND BEYOND THE CONTRACT TIME LIMIT FOR COMPLETION OF PHASE 1.
- D. IF ADDITIVE BID SCHEDULE - TAXILANE CONNECTOR IS SELECTED FOR CONSTRUCTION, CONTRACTOR WILL BE ALLOWED 30 CALENDAR DAYS TO COMPLETE THE ADDITIVE BID WORK ELEMENTS. 7 CALENDAR DAYS WILL BE ALLOWED FOR THE COMPLETION OF WORK WITHIN PHASE 2A LIMITS. PHASE 2A WORK SHALL BE COMPLETED CONCURRENTLY WITH PHASE 2 AND PHASE 2A SHALL NOT EXTEND BEYOND THE CONTRACT TIME LIMIT FOR PROJECT COMPLETION.
- E. SIMULTANEOUS CLOSURE OF TAXIWAY A AND HANGAR TAXILANE A SHALL BE LIMITED TO A SINGLE DAY TO ALLOW ASPHALT PAVING TO BE COMPLETED WITHIN A SINGLE CONSTRUCTION DAY.



SUBMITTAL PHASE NOTES

1. SUBMITTAL PHASE IS INTENDED TO FACILITATE ALL PRE-CONSTRUCTION ACTIVITIES BETWEEN NOTICE-TO-PROCEED (NTP) AND ON-SITE WORK.
2. CONTRACTOR SHALL PREPARE AND PROVIDE ALL REQUIRED SUBMITTALS PER THE SPECIFICATIONS, INCLUDING BUT NOT LIMITED TO HANGAR STRUCTURAL DESIGN DRAWINGS, FOUNDATION DESIGN, AND ALL REQUIRED LOCAL PERMITS.
3. MATERIALS SHALL BE ORDERED AND DELIVERED TO THE SITE WITH ADEQUATE TIME TO BE UTILIZED IN THE SUBSEQUENT PHASES OF WORK. CONTRACTOR SHALL COORDINATE SUBMITTAL SCHEDULE WITH ENGINEER.
4. NO ON-SITE WORK ALLOWED UNTIL ALL HANGAR BUILDING SHOP DRAWINGS, FOUNDATION DESIGN, AND LOCAL PERMITS HAVE BEEN SUBMITTED AND ALL LOCAL BUILDING PERMITS HAVE BEEN APPROVED AND ISSUED TO CONTRACTOR.

PHASE 1 NOTES

1. SEE CONSTRUCTION SAFETY AND PHASING PLAN GENERAL NOTES FOR ADDITIONAL REQUIREMENTS.
2. ALL BASEBID WORK ELEMENTS WITHIN THE PHASE 1 WORK LIMITS SHALL BE COMPLETE BY THE END OF PHASE 1, REGARDLESS OF ADDITIVE BID AWARD.

PHASE 1 WORK ELEMENTS

- CONSTRUCTION ACCESS
- TEMPORARY TRAFFIC CONTROL
- TEMPORARY EROSION CONTROL
- ASPHALT PAVEMENT REMOVAL
- DEMOLITION
- EXCAVATION AND GRADING
- CONCRETE SECTION CONSTRUCTION
- HANGAR FOUNDATION CONSTRUCTION
- HANGAR BUILDING CONSTRUCTION
- ELECTRICAL AND UTILITY INSTALLATION

REPLACED ENTIRE SHEET

PRINT IN COLOR

THIS DRAWING IS INTENDED TO BE PRINTED IN COLOR. PRINTING IN BLACK AND WHITE MAY REDUCE READABILITY AND ALTER ENTITY DEFINITION OR REPRESENTATION.

PRECISION APPROACH ENGINEERING
 5125 Southwest Hout Street
 Corvallis, OR 97333
 541•754•0043



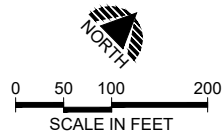
1 ADDENDUM NO. 2 | 11/30/2024 | TLM
 REVISIONS: | DATE | APPD.

DATE: SEP 2024
 DESIGN: DRR
 DRAWN: JAW
 CHECKED: TLM
 REVISION NUMBER: 0
 SCALE: AS SHOWN

PRINEVILLE - CROOK COUNTY AIRPORT
 NEW AVIATION T-HANGAR AND TAXILANE
CONSTRUCTION SAFETY AND PHASING PLAN - PHASE 1
 PRECISION APPROACH ENGINEERING, INC.
 AIG (BIL) NO. 3-41-0051-023-2025

PROJECT NUMBER: CCO009
 SHEET NO. 6
 OF 25

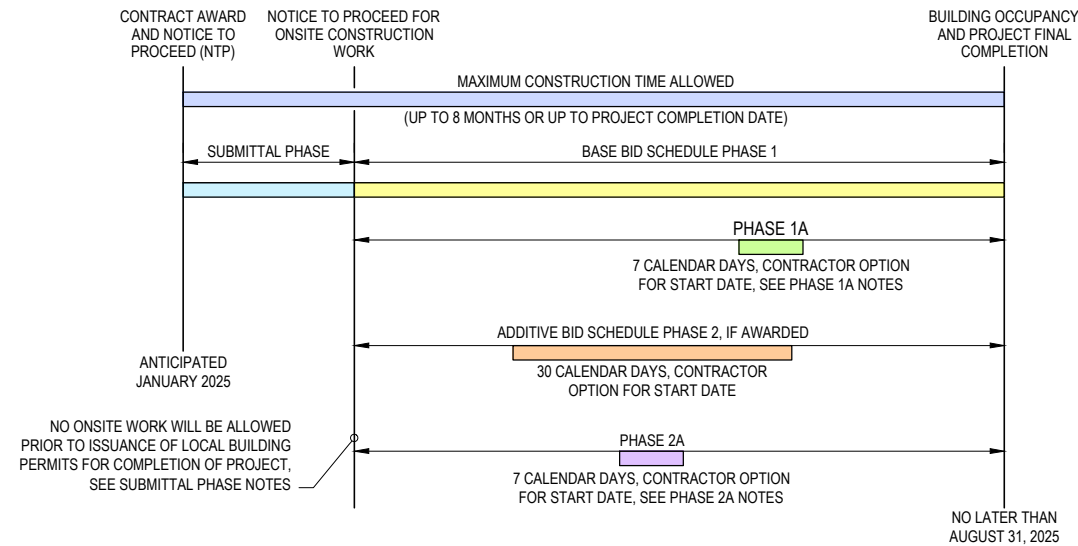
10/30/24 - 3:11pm - jwade - P:\C\cco009-new t-hangar\0400CAD\DWG\Sheets\CCO009-CSPP.dwg



LEGEND

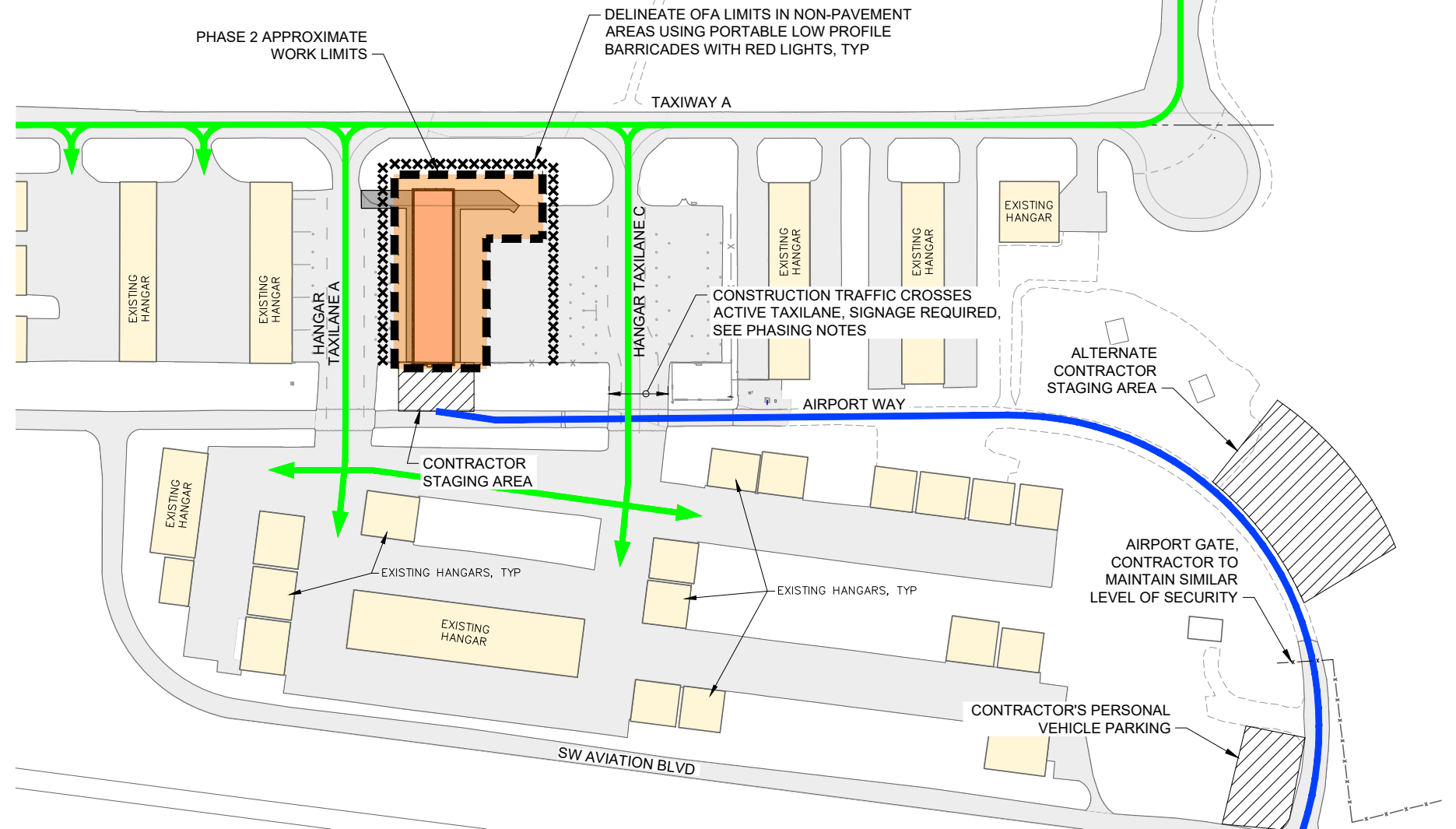
- AIRCRAFT OPERATIONS, SEE CONSTRUCTION PLAN GENERAL NOTE 8, SHEET 10.
- CONSTRUCTION TRAFFIC, SEE CONSTRUCTION PLAN GENERAL NOTE 8, SHEET 10.
- XXXXX PORTABLE LOW PROFILE BARRICADES WITH RED LIGHTS TO BE PLACED BY THE CONTRACTOR DURING TAXILANE, APRON AND/OR OTHER WORK AREA CLOSURES THIS PHASE OR AS DIRECTED BY THE ENGINEER. BARRICADES TO BE PLACED OUTSIDE OF TAXIWAY SAFETY AREAS FOR OPEN TAXIWAYS OR TAXILANES. MAY REQUIRE ADJUSTMENT DURING CONSTRUCTION ACTIVITIES, SEE CONSTRUCTION SAFETY AND PHASING PLAN TEXT AND DETAIL.

PROJECT CONSTRUCTION SCHEDULE



PROJECT CONSTRUCTION SCHEDULE NOTES

- A. TAXIWAYS, TAXILANES, AND AIR OPERATIONS AREA (AOA) IMPACTS ASSOCIATED WITH EACH PHASE ARE AS INDICATED ON THE DRAWINGS.
- B. IF THE CONTRACTOR FAILS TO COMPLETE ANY OF THE PHASES WITHIN THE SPECIFIED TIME PERIOD, LIQUIDATED DAMAGES MAY BE ASSESSED, SEE SPECIFICATIONS.
- C. CONTRACTOR WILL BE ALLOWED 7 CALENDAR DAYS TO COMPLETE THE WORK IN PHASE 1A. PHASE 1A SHALL NOT EXTEND BEYOND THE CONTRACT TIME LIMIT FOR COMPLETION OF PHASE 1.
- D. IF ADDITIVE BID SCHEDULE - TAXILANE CONNECTOR IS SELECTED FOR CONSTRUCTION, CONTRACTOR WILL BE ALLOWED 30 CALENDAR DAYS TO COMPLETE THE ADDITIVE BID WORK ELEMENTS. 7 CALENDAR DAYS WILL BE ALLOWED FOR THE COMPLETION OF WORK WITHIN PHASE 2A LIMITS. PHASE 2A WORK SHALL BE COMPLETED CONCURRENTLY WITH PHASE 2 AND PHASE 2A SHALL NOT EXTEND BEYOND THE CONTRACT TIME LIMIT FOR PROJECT COMPLETION.
- E. SIMULTANEOUS CLOSURE OF TAXIWAY A AND HANGAR TAXILANE A SHALL BE LIMITED TO A SINGLE DAY TO ALLOW ASPHALT PAVING TO BE COMPLETED WITHIN A SINGLE CONSTRUCTION DAY.



PHASE 2 NOTES (ADDITIVE BID - TAXILANE CONNECTOR)

1. IF ADDITIVE BID SCHEDULE IS AWARDED, ADDITIVE BID WORK ELEMENTS SHALL BE COMPLETED WITHIN THE PHASE 2 WORK PERIOD.
2. SEE CONSTRUCTION SAFETY AND PHASING PLAN GENERAL NOTES FOR ADDITIONAL REQUIREMENTS.
3. CONTRACTOR TO PLACE BARRICADES AT TRAFFIC ACCESS POINTS AND PROVIDE OTHER TRAFFIC DELINEATION AS DIRECTED BY THE OWNER.
4. CONTRACTOR SHALL NOT LEAVE OR PLACE FOREIGN OBJECT DEBRIS (FOD) ON OR NEAR ACTIVE AREAS, MATERIALS TRACKED ONTO ACTIVE AREAS SHALL BE REMOVED IMMEDIATELY BY THE CONTRACTOR.
5. WHEN THE CONTRACTOR AND/OR ANY OF ITS SUBCONTRACTORS, SUPPLIERS, OR AGENTS ARE ON A TAXILANE OR APRON, EVEN IF TEMPORARILY CLOSED, THEY SHALL YIELD RIGHT OF WAY TO AIRCRAFT AT ALL TIMES, ANY PERSON OR VEHICLE TRANSITING THE AREA SHALL YIELD AND WAIT FOR THE AIRCRAFT TO PASS OR MAKE ITS INTENTIONS KNOWN PRIOR TO PROCEEDING.
6. CONTRACTOR ACCESS TO WORK AREA REQUIRES CROSSING PORTIONS OF THE ACTIVE AIR OPERATIONS AREA(AOA), PARKING OR STAGING OF EQUIPMENT OR MATERIALS IS NOT PERMITTED WITHIN THIS AREA.
7. VEHICLES CROSSING THE AOA SHALL STOP OUTSIDE THE AOA AND CONFIRM NO AIRCRAFT TRAFFIC PRIOR TO TRANSITING THE AOA. CONTRACTOR SHALL PLACE TEMPORARY STOP SIGNS AS APPROVED BY THE OWNER WHEN ACCESS ROUTE IS IN USE. SEE SPECIFICATIONS FOR ADDITIONAL REQUIREMENTS. CONSTRUCTION TRAFFIC SHALL YIELD RIGHT-OF-WAY TO AIRCRAFT AT ALL TIMES.

PHASE 2 WORK ELEMENTS

- TEMPORARY TRAFFIC CONTROL
- ASPHALT PAVEMENT REMOVAL
- DEMOLITION
- EXCAVATION AND GRADING
- PAVEMENT SECTION CONSTRUCTION
- ASPHALT PAVING
- PAVEMENT MARKING

REPLACED ENTIRE SHEET

PRINT IN COLOR

THIS DRAWING IS INTENDED TO BE PRINTED IN COLOR. PRINTING IN BLACK AND WHITE MAY REDUCE READABILITY AND ALTER ENTITY DEFINITION OR REPRESENTATION.

PRECISION APPROACH ENGINEERING
 5125 Southwest Hout Street
 Corvallis, OR 97333
 541•754•0043



1 ADDENDUM NO. 2 | 11/30/2024 | TLM
 REVISIONS: | DATE | APPD.

DATE: SEP 2024
 DESIGN: DRR
 DRAWN: JAW
 CHECKED: TLM
 REVISION NUMBER: 0
 SCALE: AS SHOWN

PRINEVILLE - CROOK COUNTY AIRPORT
 NEW AVIATION T-HANGAR AND TAXILANE
ADDITIVE BID CONSTRUCTION SAFETY AND PHASING PLAN - PHASE 2
 PRECISION APPROACH ENGINEERING, INC.
 AIG (BIL) NO. 3-41-0051-023-2025

PROJECT NUMBER: CCO009
 SHEET NO. 8
 OF 25

10/30/24 - 3:11pm - jwade - P:\Ccoo09-new t-hangar\0400CAD\DWG\Sheets\CCO009-CSPP.dwg

