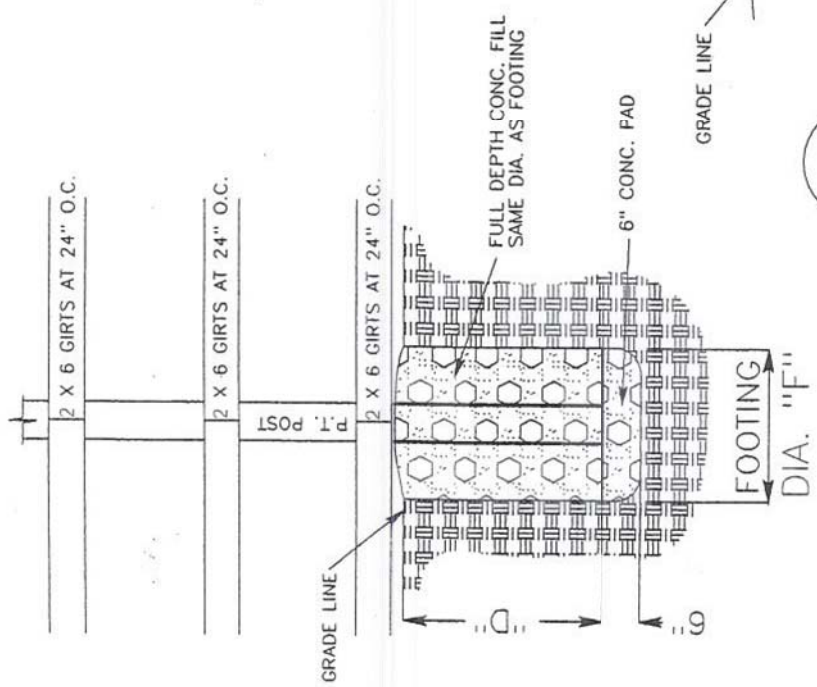


NOTE:
 85 MPH WIND EXPOSURE C, SEISMIC 2B
 LIVE LOAD, 25 PSF
 DEAD LOAD, 10 PSF



POST FOOTING DETAIL 2

NOTE: POLE BUILDINGS MAY BE BUILT FOLLOWING THESE GUIDELINES. ANY DEVIATIONS WILL REQUIRE THE BUILDING TO BE DESIGNED BY AN OREGON LICENSED ENGINEER OR ARCHITECT.

"H"	"S"	POST SIZE	FOOTING DIA. "F"	"D"	BOLTS (QTY. & SIZE)
10'	24'	6" X 6"	18" DIA. X 6" THICK	3'-3"	(2) 5/8" DIA. THRU-BOLTS
12'	24'	6" X 8"	18" DIA. X 6" THICK	3'-8"	(2) 5/8" DIA. THRU-BOLTS
14'	24'	6" X 8"	18" DIA. X 6" THICK	3'-8"	(2) 5/8" DIA. THRU-BOLTS
10'	30'	6" X 6"	18" DIA. X 6" THICK	3'-3"	(2) 5/8" DIA. THRU-BOLTS
12'	30'	6" X 8"	18" DIA. X 6" THICK	3'-8"	(2) 5/8" DIA. THRU-BOLTS
14'	30'	6" X 8"	18" DIA. X 6" THICK	3'-8"	(2) 5/8" DIA. THRU-BOLTS
10'	36'	6" X 6"	18" DIA. X 6" THICK	3'-3"	(3) 5/8" DIA. THRU-BOLTS
12'	36'	6" X 8"	18" DIA. X 6" THICK	3'-8"	(3) 5/8" DIA. THRU-BOLTS
14'	36'	6" X 8"	24" DIA. X 6" THICK	3'-8"	(3) 5/8" DIA. THRU-BOLTS

MAX PURLIN SPANS

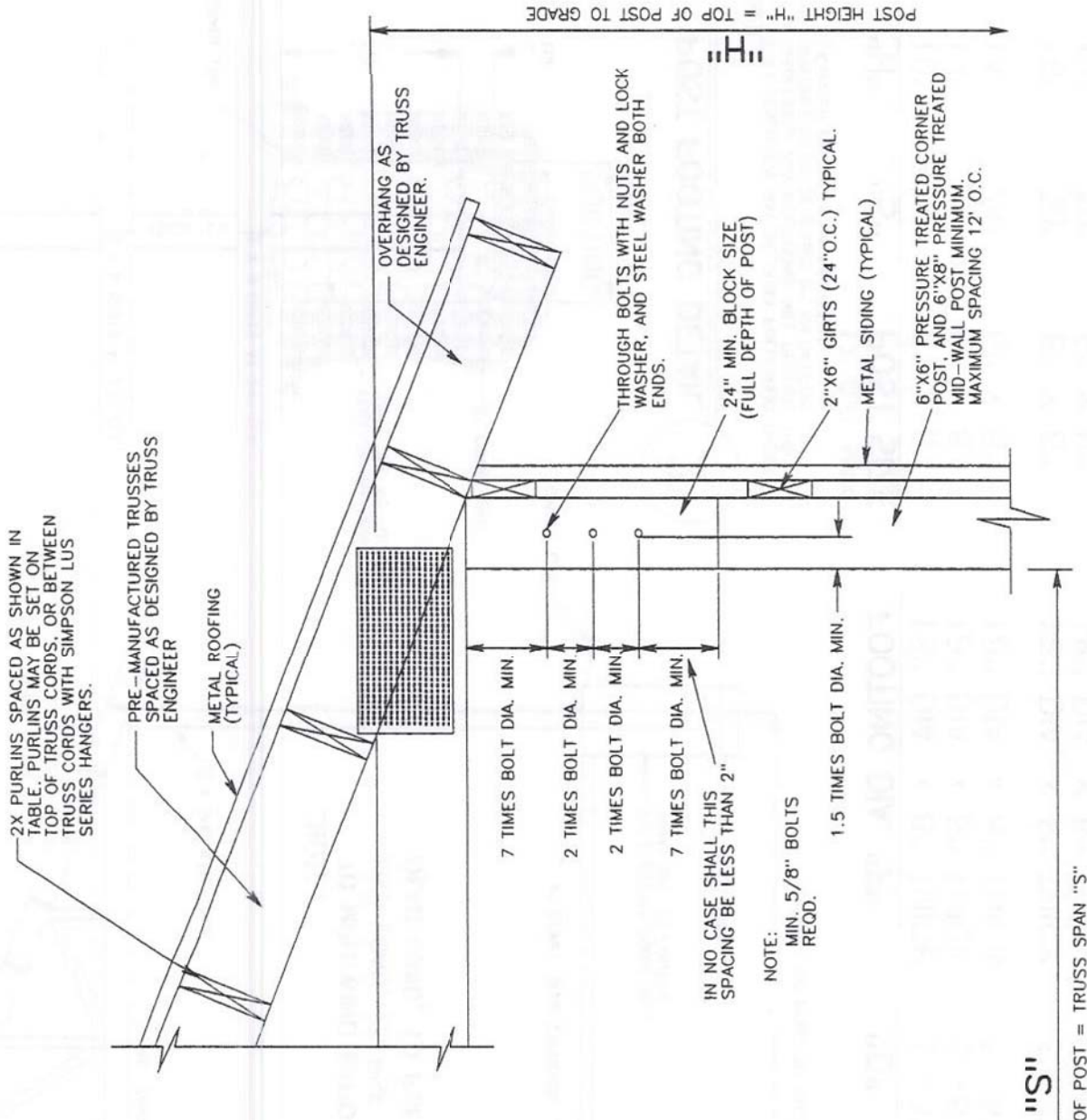
#2 2"x6"	MAX SPAN AT 24" O.C. = 10'-4"
#2 2"x6"	MAX SPAN AT 16" O.C. = 12'-8"
#1 2"x6"	MAX SPAN AT 24" O.C. = 11'-1"
#1 2"x6"	MAX SPAN AT 16" O.C. = 13'-3"
#2 2"x8"	MAX SPAN AT 24" O.C. = 13'-2"
#2 2"x8"	MAX SPAN AT 16" O.C. = 16'-1"

NOTE:

85 MPH WIND EXPOSURE C,
SEISMIC ZONE 2B

ROOF LIVE LOAD, 25 PSF

ROOF DEAD LOAD, 10 PSF



POST TRUSS DETAIL 1